

# MONTHLY MEMBERSHIP PROGRESS REPORT

LOCATION TEXAS

District 2 E2

Results as of: 10/31/2020

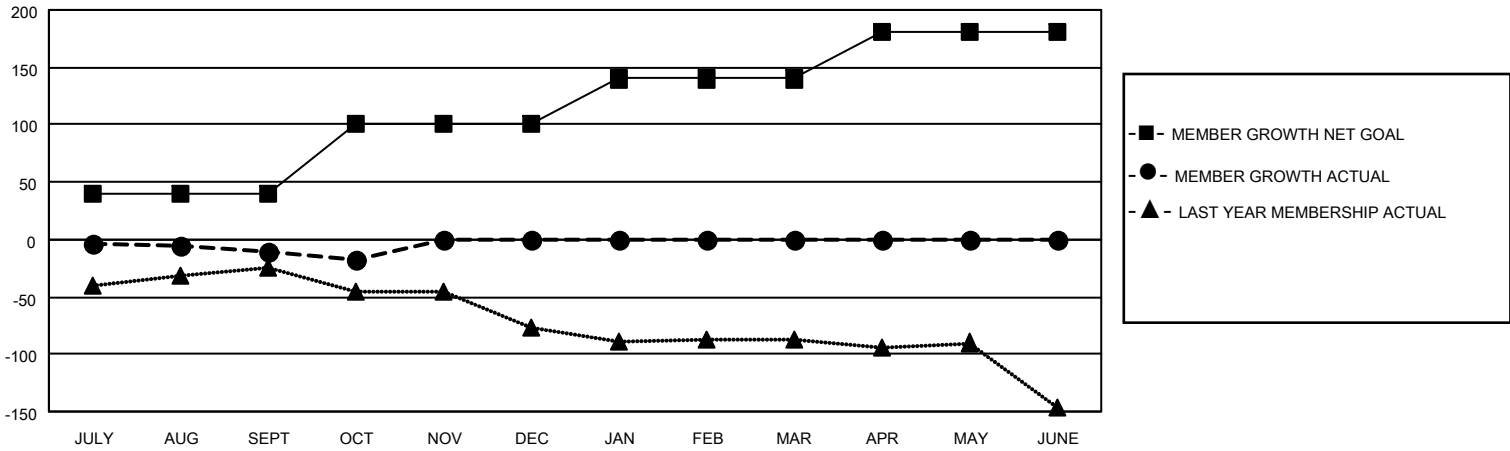
Clubs			
RESULTS FOR 2020-2021			
QUARTER	NEW CLUB GOAL	NEW CLUBS	DROPPED CLUBS
JULY/AUG/SEPT	0	0	2
OCT/NOV/DEC	1	0	0
JAN/FEB/MAR	0	0	0
APR/MAY/JUNE	0	0	0

Members			
RESULTS FOR 2020-2021			
QUARTER	MEMBER GROWTH NET GOAL	MEMBER GROWTH ACTUAL	DROPPED MEMBERS ACTUAL (including transfers)
JULY/AUG/SEPT	40	37	42
OCT/NOV/DEC	60	15	17
JAN/FEB/MAR	40	0	0
APR/MAY/JUNE	41	0	0

**GOALS AND ACTUAL NEW CLUBS CUMULATIVE**



**GOALS AND ACTUAL MEMBERS CUMULATIVE**



DROPPED CLUBS: 2	17 CLUBS OF 66 ADDED 1 OR MORE NEW MEMBERS	<b>GENDER DISTRIBUTION</b>
<b>DROPPED MEMBERS</b>	<a href="#">CLICK HERE FOR CUMULATIVE MEMBERSHIP DATA</a>	MALE 1,193 (66.54%)
DECEASED 9		FEMALE 600 (33.46%)
CLUB CANCELLED 0		TOTAL FAMILY UNIT MEMBERS 251
OTHER 50		FAMILY MEMBERS PAYING HALF DUES 126
<b>TOTAL 59</b>		